

Find #2

Blue Wing Inn
131 East Spain Street



Across the street from the mission, look for an adobe building called the Blue Wing Inn. It looks like it did 150 years ago.

HISTORY HUNTER QUESTION #2:

On the Blue Wing's metal sign it says a bandit named Joaquin Murietta and another guy with an odd nickname visited here. What was his nickname?

Find #4

The Swiss Hotel
18 West Spain Street



Walk down Spain Street toward First Street West. Go past the Sonoma Barracks and the Toscano Hotel. Walk past the empty lot. Look for The Swiss Hotel.

HISTORY HUNTER QUESTION #4:

Read the metal sign on the wall. Who built this building? When? What else did you learn?

Find #6

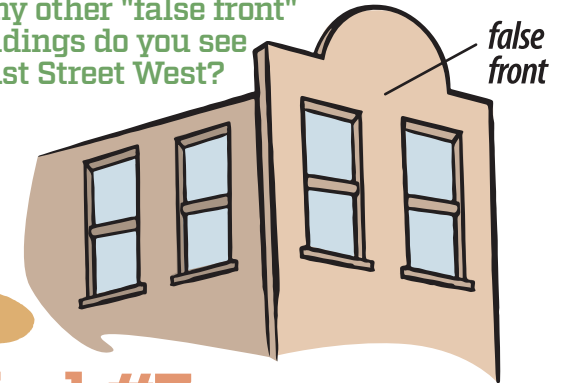
Sign of the Bear
435 1st Street West



Keep walking along the 1st Street West sidewalk on the Plaza side. Do you see a building with a large flat front that's taller than the rest of the building? That's called a "false front."

HISTORY HUNTER QUESTION #6:

What does Sign of the Bear sell? How many other "false front" buildings do you see on 1st Street West?



Find #3

Sonoma Barracks
98 East Spain Street



Walk back to the corner of East Spain and 1st Street East. Look for a building that looks like a fort. That's the Sonoma Barracks.

HISTORY HUNTER QUESTION #3:

How many windows and doors does the Sonoma Barracks have? Why do you think some of the windows are small?

Find #5

El Dorado Kitchen + Hotel
405 1st Street West



You'll find El Dorado Kitchen + Hotel at the corner of Spain Street and 1st Street West.

HISTORY HUNTER QUESTION #5:

Cross the street to the Plaza so that you can see the whole building. Look at the whole building, not just the hotel. Count the businesses in the whole building. Do you see how both ends of the building look alike?

Find #7

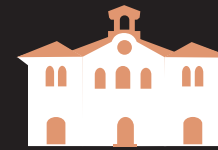
Leese Adobe
497 1st Street West



The Leese Adobe is hard to find. But now that you're a History Hunter, search 1st Street West for a building that resembles the Blue Wing Inn and The Swiss Hotel. That's the Leese Adobe.

HISTORY HUNTER QUESTION #7:

How many windows and doors does the Leese Adobe have? In what ways does the Leese Adobe look like the Blue Wing Inn and The Swiss Hotel?



Find #8

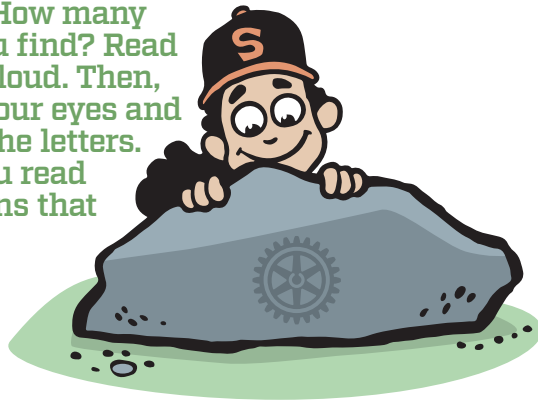
Small Playground
114 East Spain Street



Look into the Plaza to find the playground for young children.

HISTORY HUNTER QUESTION #8:

At the playground for young children, hunt for the Rotary metal signs on the rocks. How many can you find? Read them aloud. Then, close your eyes and touch the letters. Can you read the signs that way?



Find #9

Sonoma City Hall



From the small playground, look at the stone building in the center of the Plaza. That Sonoma's City Hall.

QUESTION #9:

Walk around City Hall. Notice how all four sides look alike. Why do you think they built it that way?

Find #10

Bear Flag Monument
On the Plaza



Follow the sidewalk from City Hall, past an amphitheater and the Visitors Bureau that was once the library. Find a huge boulder with a statue of a man waving a flag on top.

HISTORY HUNTER QUESTION #10:

If you captured a place, what animal would be on your flag? Why would you choose that animal?



Now you are a History Hunter!

See if you can find more historic signs around the Sonoma Plaza. Which "find" on the Sonoma Plaza was your favorite? Can you share a story you found with someone?

Draw a picture of your favorite Sonoma Plaza building. Or draw your own Sonoma map, like Mariano Vallejo did a long time ago.

Send your drawing to SonomaPlazaHistory.com and we may post it. Email your artwork to: info@sonomaplazahistory.com or:
Sonoma Plaza History
c/o Sonoma Community Center
276 East Napa Street
Sonoma, CA 95476

Sonoma Plaza History Hunt

Sponsored by
Rotary Club of Sonoma Valley

When Mariano Vallejo drew the map of Sonoma in the 1830s, he outlined what is still the center of our town some 200 years later.

History Hunt tells stories of one of Sonoma Plaza, one of California's most historic places. It was home to native people for many thousands of years. Then it was part of Mexico. This is where modern California began.

Follow the directions to hunt for 10 historic places. Once at each place, scan the QR code for a story about it. Then, answer each History Hunter question!



Find #1

Mission San Francisco Solano
114 East Spain Street



Look for a building with a cross on top at the corner of Spain Street and 1st Street East.

HISTORY HUNTER QUESTION #1:

Read the metal sign on the mission. Was this the only California mission built when California was part of Mexico?